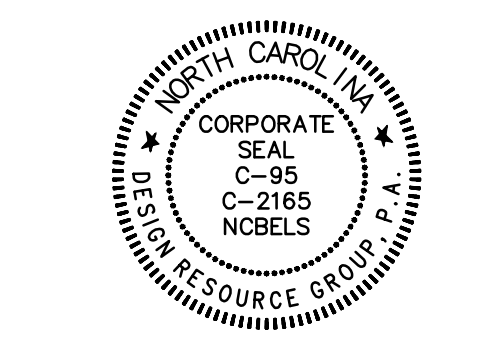


SITE DATA

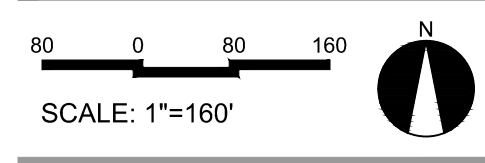
JURISDICTION:	CITY OF LOCUST
PIN #:	5575-04-80-6640, 5574-02-79-7828, & 5574-02-79-3292
EXISTING ZONING:	OPS
SITE AREA:	±123.48 ACRES TOTAL 1.5 ACRES ALONG ELM LANE (NOT INCLUDED) 5 ACRES POND AREA TO BE (INCLUDED) ±121.98 ACRES TOTAL
PROPOSED LOTS:	247 SINGLE FAMILY LOTS
PROPOSED DENSITY:	±2.02 D.U.A.
OPEN SPACE PROVIDED:	±40 ACRES (±33% OF SITE)
SETBACKS:	25' FRONT SETBACK (PER ORDINANCE) 25' REAR SETBACK (PER ORDINANCE) 5' SIDE SETBACK
TYPICAL LOT SIZE:	70' WIDE (MIN.) X 120' DEEP
AMENITY AREAS TO INCLUDE: (BUT NOT LIMITED TO)	POTENTIAL POCKET PARKS WITH BENCH SEATING POTENTIAL DOG PARKS OR PLAYGROUNDS WITH BENCH SEATING TRAIL (TYP.)



PRELIMINARY

LOCUST SITE
LOCUST, NORTH CAROLINA
HOPPER COMMUNITIES
1814 EUCLID AVENUE
CHARLOTTE, NORTH CAROLINA 28203

PRELIMINARY SITE PLAN



PROJECT #: 598-010
DRAWN BY: JO
CHECKED BY: NB

JULY 31, 2019

REVISIONS:

© 2019 DRG PHOTO LOCUST SITE PLAN - STUDY AREA - LOCUST, NC. SITE PLAN 07/31/19