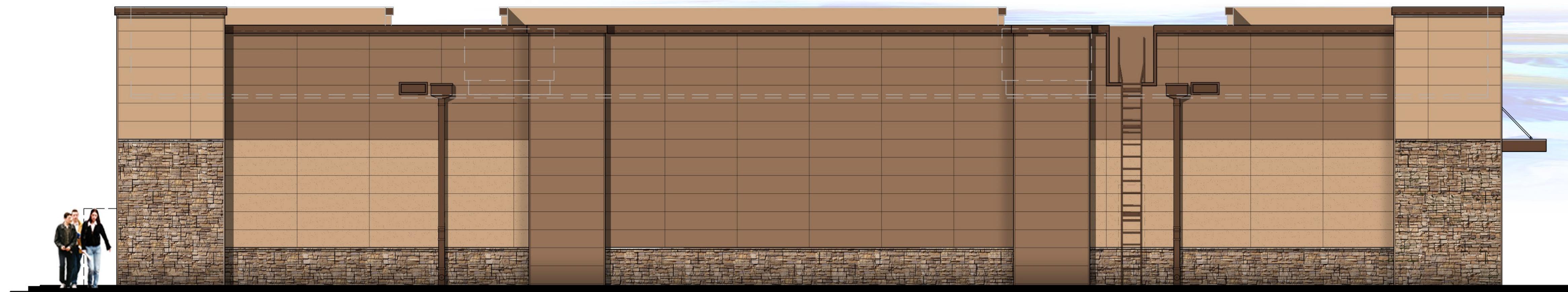
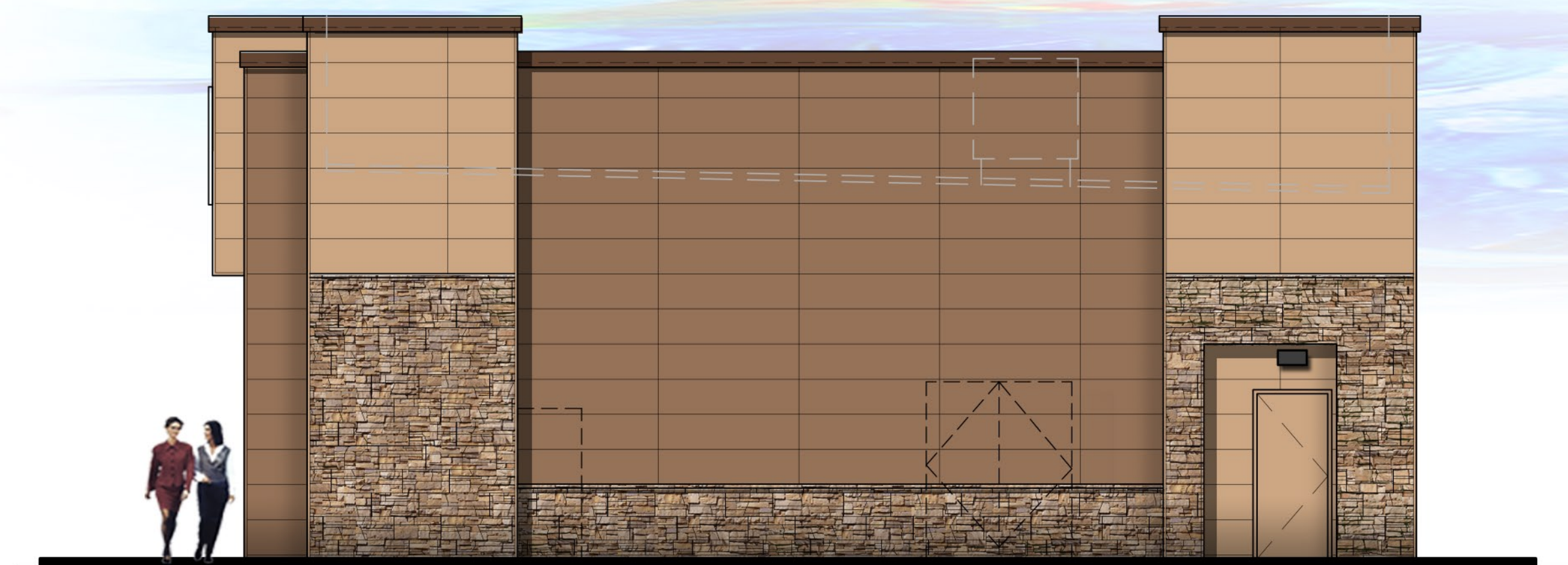




1 FRONT ELEVATION (SOUTH)
SCALE: 3/16" = 1'-0"



2 BACK ELEVATION (NORTH)
SCALE: 3/16" = 1'-0"



3 SIDE ELEVATION (EAST)
SCALE: 3/16" = 1'-0"



4 SIDE ELEVATION (WEST)
SCALE: 3/16" = 1'-0"