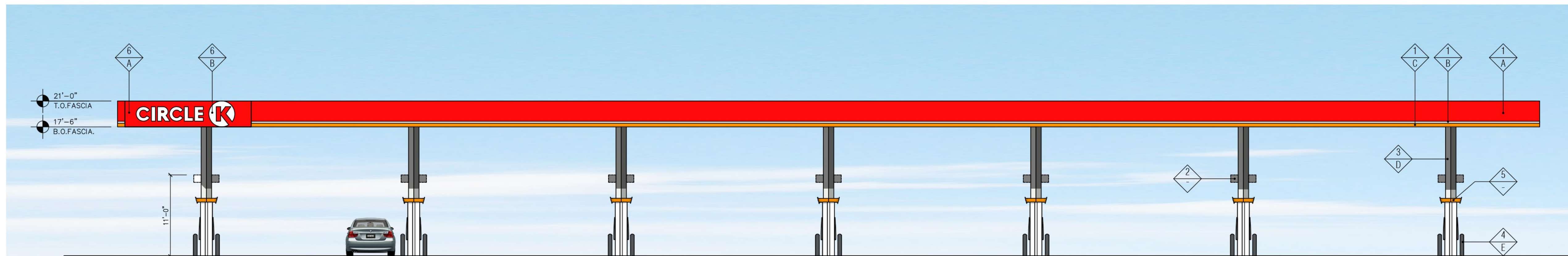


3 "SIDE" ELEVATION (EAST)
SCALE: 1/8" = 1'-0"

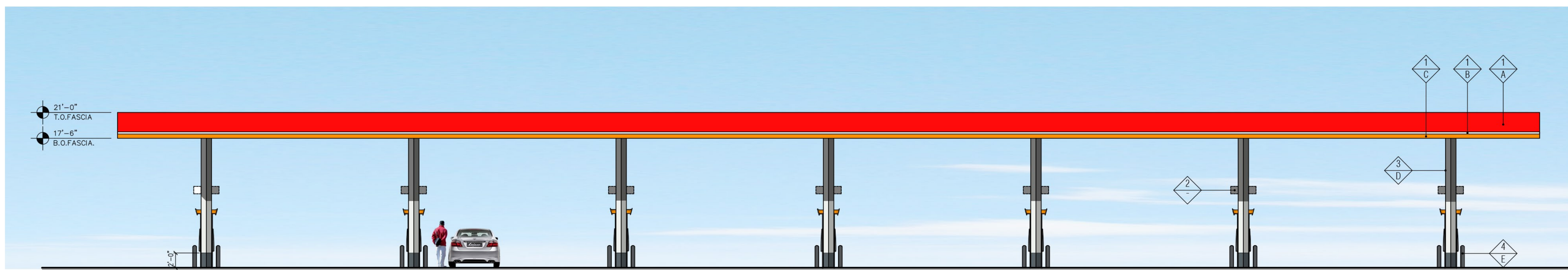
4 "SIDE" ELEVATION (WEST)
SCALE: 1/8" = 1'-0"

FINISH SCHEDULE	
FINISH MATERIAL	
1	ACM PANEL "TEX-COTE"
2	COLUMN FLAGS BY SIGNAGE VENDOR
3	STEEL COLUMN WITH PAINT FINISH
4	6" Ø BOLLARD, 36" HIGH
5	FUEL PUMP
6	INTERNALLY ILLUMINATED SIGN UNDER SEPARATE PERMIT
FINISH COLOR	
A	CIRCLE K RED #PMS 485
B	CIRCLE K WHITE
C	CIRCLE K ORANGE #PMS 144
D	RAL9016 SHELL WARM WHITE
E	PVC BOLLARD SLEEVE "DARK GRAY"
F	SHERWIN WILLIAMS - SW6236 - GRAYS HARBOR

Notes:
 1. Colors shown on these elevations are for illustration purposes only. For actual colors, refer to manufacturer's samples.
 2. The fascia panels are pre-finished by signage vendor.
 3. All signs require a separate submittal.
 4. All lighting on canopy to be flush mounted with fascia.



2 "FRONT" ELEVATION (SOUTH)
SCALE: 1/8" = 1'-0"



1 "REAR" ELEVATION (NORTH)
SCALE: 1/8" = 1'-0"